

Electric Fireplaces



COMPLETE COLLECTION

A



Artwork pictured above may be found in our Artwork Collection items #FCK8294B-1 & #FCK8294B-2

Yosemite Home Décor Electric Fireplace Inserts can help save you thousands of dollars over the cost of a traditional brick and mortar unit. Go green with our energy efficient units and reduce your carbon footprint while still enjoying the comforts of a fireplace year round. We are proud to offer you electric fireplace inserts that will fit beautifully into any application. All units feature temperature control and come equipped with child safe glass that remains cool to the touch.

- For added convenience all inserts come standard with a remote control for variable heat and variable flame with easy to reach manual controls
- Healthier for the environment than gas or wood burning units
- Safe to use, no fuel combustion, no cleaning, zero carbon monoxide emissions
- Heat a 220 sq. ft room for pennies an hour, variable heat from 750-1500 watts
- Quick and easy installation

**A. DF-EFP765
TRITON ELECTRIC
FIREPLACE INSERT**

Full Metal Construction
Black Finish
33" W x 30" H x 9" D
59 lbs. gross weight





The Perseus Electric Fireplace Insert is the largest insert we offer. At 49" wide x 41" high this unit will fit seamlessly into most larger scale applications.

**B. DF-EFP1240
PERSEUS ELECTRIC
FIREPLACE INSERT**

Full Metal Construction
Black Finish
42" W x 41" H x 10" D
106 lbs. gross weight



The Juno fits into both old and new construction spaces.

C. DF-EFP955B

JUNO ELECTRIC FIREPLACE INSERT
Full Metal Construction with Black Finish
38" W x 32" H x 14"D
102 lbs. gross weight



The Pandora fits inside the existing fireplace space.

D. DF-EFP920

PANDORA ELECTRIC FIREPLACE INSERT
Full Metal Construction with Black Finish
27¼" W x 23½" H x 8"D
Dimensions with Trim
36¼" W x 27" H x 9¼"D
52 lbs. gross weight

ELECTRIC FIREPLACE MANTEL

A. DF-MP765
CERES ELECTRIC
FIREPLACE MANTEL
White Wooden Mantle
53" W x 42" H x 15½" D
97 lbs. gross weight



*Mantel only: Electric Fireplace Insert DF-EFP765,
shown above, is not included. It can be found on page 200

FREE STANDING ELECTRIC FIREPLACE



B. DF-EFP180
ALPINE ELECTRIC
FIREPLACE
Rich Mahogany Finish
46½" W x 42" H x 18"D
149 lbs. gross weight



Artwork pictured above may be found in our
Artwork Collection item #ARTAA1306

C



ELEC. FIREPLACES

Yosemite Home Décor wall mounted electric fireplaces are conventional and elegant. This sleek carbon flame electric fireplace gives the look of a traditional wood burning unit without the hassle or mess. This unit is lightweight and easy to mount on the wall. This unit features temperature control and comes equipped with child safety glass that remains cool to the touch.

- Remote control included
- Air friendly alternative vs. natural wood burning units
- Safe to use indoors, no fuel combustion, zero emissions
- Heats up to 220 square feet
- Quick and easy installation

**C. DF-EFP1000
CARBON FLAME 44
ELECTRIC FIREPLACE**

Full Metal Construction
with Glass Face
39½" W x 25" H x 8" D
52 lbs. gross weight





A. DF-EFP1830G
WIDE SCREEN
ELECTRIC FIREPLACE
Full Metal Construction
with Wide Glass Opening
39½" W x 21¼" H x 5¼" D
63 lbs. gross weight



B. DF-EFP900
CARBON FLAME 35
FIREPLACE
Full Metal Construction
with Wide Glass Opening
35½" W x 20" H x 6"D
33 lbs. gross weight



C. DF-EFP148
CARBON FLAME 58 FIREPLACE
Full Metal Construction with Glass Face
58¼" W x 26" H x 6"D
100 lbs. gross weight



D. DF-EFP148NH
CARBON FLAME 58 NO HEAT FIREPLACE
Full Metal Construction with Glass Face
58¼" W x 26" H x 6"D
100 lbs. gross weight





E. DF-EFP800
ADOBE 38
ELECTRIC FIREPLACE

Polished Faux
 Travertine Finish
 38" W x 25½" H x 6" D
 46 lbs. gross weight



F. DF-EFP600
ADOBE 59
ELECTRIC FIREPLACE

Polished Faux
 Travertine Finish
 58¼" W x 26" H x 6" D
 44 lbs. gross weight



G. DF-EFP620-SS
ARIES 24
ELECTRIC FIREPLACE

Full Metal Construction
 Stainless & Black Finish
 25½" W x 20½" H x 8½" D
 30 lbs. gross weight



*The only ember option is coal

H. DF-EFP1336-SS
ARIES 25
ELECTRIC FIREPLACE

Full Metal Construction
 Stainless & Black Finish
 53" W x 22¼" H x 6" D
 68 lbs. gross weight



Yosemite Home Décor Recessed Electric Fireplaces allow you the option to either mount on a wall or recess flush into the wall. We are proud to offer you electric fireplaces that will fit beautifully into any application. All units feature temperature control and come equipped with child safe glass that remains cool to the touch.

- Remote Control included
- Manual controls on unit
- Venting on front of unit
- Realistic flame display operates with or without heat
- Eco-friendly, no wood burning emissions
- Zero clean-up or maintenance
- Heats up to 220 square feet of space
- Ember options: Coal or Crystals

A. DF-EFP1270-BLT

50" BUILT-IN
ELECTRIC FIREPLACE

Full Metal Construction
with Glass Face
50" W x 25" H x 8" D



*Coal option shown.



B. DF-EFP1276-BLT

50" BUILT-IN
ELECTRIC FIREPLACE

Full Metal Construction
with Glass Face
50" W x 26" H x 7½" D



*Crystal option shown.

C. DF-EFP1700-BLT

70" BUILT-IN
ELECTRIC FIREPLACE

Full Metal Construction
with Glass Face
70" W x 25" H x 8" D



*Coal option shown.



D



*Crystal option shown.

E, F



ELEC. FIREPLACES

D. DF-EFP1313-BLT
95" BUILT-IN
ELECTRIC FIREPLACE

Wall Mount or Built in option
Full Metal Construction
with Glass Face
94½" W x 26½" H x 8" D
219 lbs. gross weight



E. DF-EFP1313
HERA ELECTRIC
FIREPLACE

Wall Mount Only
Full Metal Construction
with Glass Face
Embers Only
94½" W x 26½" H x 7¼" D
179 lbs. gross weight



F. DF-EFP1313NH
HERA NO HEAT
ELECTRIC FIREPLACE

Full Metal Construction
with Glass Face
May be recessed flush
into the wall
Embers Only
94½" W x 26½" H x 7¼" D





Yosemite Home Décor presents a beautifully crafted, 42 inch wall mounted electric fireplace unit with a curved black front. Enjoy a realistic flame with or without heat, year-round. Heats up 220 square feet of space with 120 volts: 750-1500 watts.

- Remote control included to adjust the heat and flame
- Quick and easy installation
- Wall or corner mounted
- Safety glass that is cool to the touch

A. DF-EFP300NM

TOWER 42 ELECTRIC FIREPLACE

Full Metal Construction with Curved Face

16" W x 41½" H x 6¼" D

53 lbs. gross weight



Yosemite Home Décor presents a beautifully crafted, 42 inch wall mounted electric fireplace unit with a curved black front. Plug your favorite listening device into this unit to hear music from dual side speakers. Enjoy a realistic flame with or without heat, year-round. Heats up 220 square feet of space with 120 volts: 750-1500 watts.

- Remote control included to adjust the heat and flame
- Quick and easy installation
- Wall or corner mounted
- Safety glass that is cool to the touch
- Plays Music



B. DF-EFP300

SYMPHONIC TOWER 42 ELECTRIC FIREPLACE

Full Metal Construction with Curved Face

16" W x 41½" H x 6¼" D

53 lbs. gross weight



STONE FRONT FACES



DF-FG900S

37" W x 20" H
Fits DF-EFP900



DF-FG148S

60" W x 26" H
Fits DF-EFP148



MIRRORED FRONT FACES



DF-FG900MG

36" W x 21" H
Fits DF-EFP900



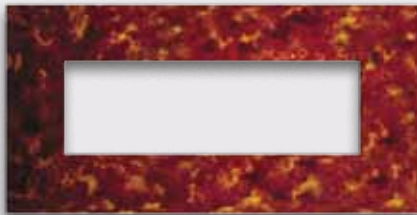
DF-FG1000MG

41" W x 26" H
Fits DF-EFP1000



ELEC. FIREPLACES

GLASS FRONT FACES



DF-FG900Z

36" W x 20" H
32 lbs. gross weight



Fits DF-EFP900



DF-FG900P

36" W x 20" H
16 lbs. gross weight



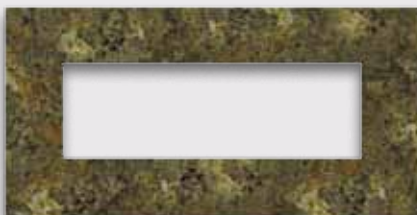
Fits DF-EFP900

DF-FG1000P

40" W x 26" H
16 lbs. gross weight



Fits DF-EFP1000



DF-FG900C

36" W x 20" H
18 lbs. gross weight



Fits DF-EFP900

BLACK GLASS FRONT FACES



DF-FG148
58¼" W x 26" H
44 lbs. gross weight



Fits DF-EFP148

DF-FG300
16" W x 41½" H
44 lbs. gross weight



Fits DF-EFP300

DF-FG900
35½" W x 20" H
26 lbs. gross weight



Fits DF-EFP900

DF-FG1000
39½" W x 25¼" H
31 lbs. gross weight



Fits DF-EFP1000

DF-FG1313
94½" W x 26½" H
88 lbs. gross weight



Fits DF-EFP1313

FAUX TRAVERTINE MDF FRONT FACES



DF-FG800
37½" W x 25 ½" H
53 lbs. gross weight



Fits DF-EFP800

MAINTAINING AN ELECTRIC FIREPLACE

Changing Light Bulbs

If you notice that the fire in your fireplace does not go all the way across the face, check to see if a bulb has burnt out. Replacing a bulb is quick, easy and the only routine maintenance you may have to do on your fireplace. Our electric fireplaces take 40 watt candelabra base bulbs and can hold anywhere from 2-6 bulbs.

Step 1: Loosen the screws and take off the bottom front cover

Step 2: Turn the spring to loosen the light bulb

Step 3: Unscrew the light bulb from the socket

Step 4: Replace with new bulb

Step 5: Place the spring over the new light bulb

Step 6: Reattach the cover and tighten the screws

